

Marriott



SPIRIT TO
SERVE
OUR COMMUNITIES™

JW MARRIOTT®
HONG KONG
香港JW萬豪酒店

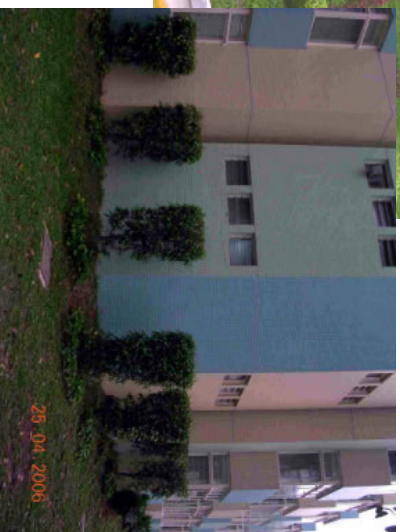
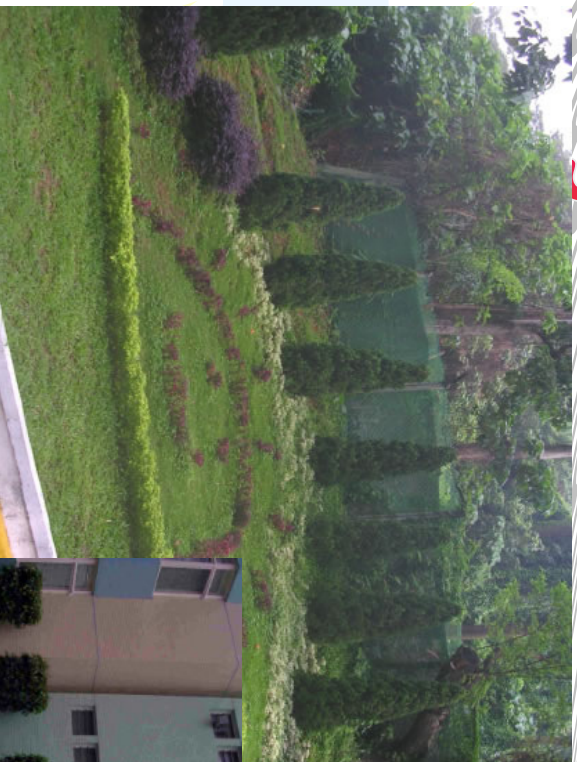
**Spirit To Serve
Our Communities**



匡智會

Hong Chi Association

Hong Chi Pinehill Village



25.04.2006

Marriott
SPIRIT TO
SERVE
OUR COMMUNITIES™

Opening of the JW and Alice Marriott Training Center



Our partnership opens valuable job opportunities for Hong Chi trainees in the hotel industry



Outstanding Disabled Employees Award 2005



Marriott
SPIRIT TO
SERVE
OUR COMMUNITIES.

Training at the Hong Chi bakery workshop



Marriott
SPIRIT TO
SERVE
OUR COMMUNITIES.

Sewing aprons, chefs' neckties Printing welcome cards for JW Marriott Hotel



Marriott
SPIRIT TO
SERVE
OUR COMMUNITIES.

Hong Chi Plant Nursery produces organic vegetables for hotel consumption



Marriott
SPIRIT TO
SERVE
OUR COMMUNITIES.

Professional and Practical Training



Marriott
SPIRIT TO
SERVE
OUR COMMUNITIES.

Expand Bakery and Laundry Workshop



Marriott
SPIRIT TO
SERVE
OUR COMMUNITIES.

Expand Plant Nursery Project



Marriott
SPIRIT TO
SERVE
OUR COMMUNITIES.

Benefits

- Successfully revamped the Association's vocational training curriculum from manufacturing to service industry
- Staff get retrained and therefore no layoff
- Expand employment opportunities for people with mental handicap
- Enhanced trainees' self confidence
- Enhanced social integration

Marriott
SPIRIT TO
SERVE
OUR COMMUNITIES.



Lessons learned in partnership

- Understanding NGO's needs
- Identify company's resources & expertise
- Brainstorm ideas together
- Identify possibilities and act on it
- Involve your associates, internal promotion
- Communication



Lessons learned in partnership

- Be honest to share the difficulties encountered
- Be interactive to communicate with staff at all levels
- Be a longstanding and trust-worthy friend
- Make it a successful story



S P I R I T T O

Partnership with Hong Chi Association

OUR COMMUNITIES



匡智會

Hong Chi Association



JW MARRIOTT®
HONG KONG