

Portuguese Community School
(Initiation Programme For Newly Arrived Children)

A Brief Introduction



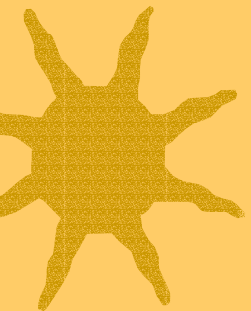
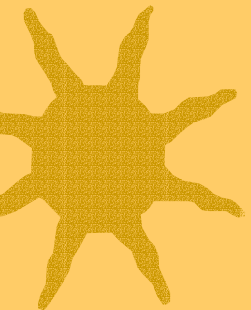
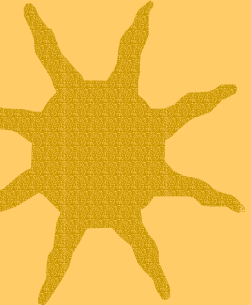
What is the Initiation Programme?

It is a full time integrated learning programme for newly arrived children to attend before they integrate into formal classes in main stream schools



Nature of the Programme

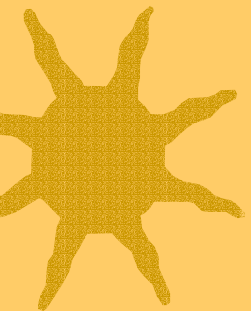
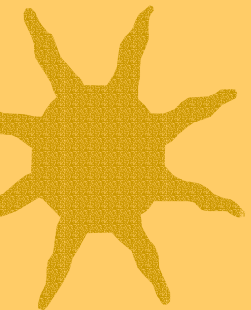
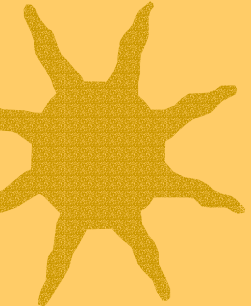
- Whole day integrated curriculum
- Specialized for the needs of newly arrived children (NAC) in HK
- Government subsidized
- Small class size with a student teacher ratio of about 1 :20





Aims of the Programme

- To enhance the students language abilities both Chinese and English
- To strengthen learning experience through exposure to real classroom situations
- To foster personal development and social adaptation.





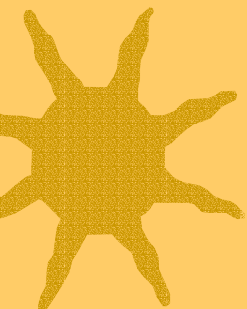
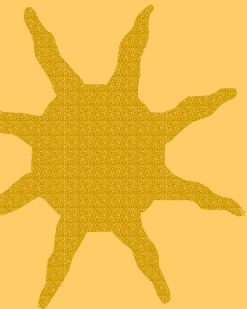
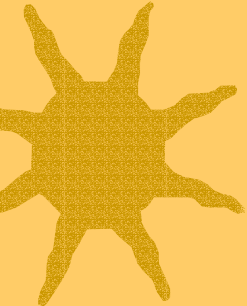
Structure of the Programme

Academic:

Aims at equipping the children with learning skills for their future studies. Subjects include Chinese, English, Maths, General Studies, Music, PE, Reading (library), Art, Computer Studies.

Non-academic:

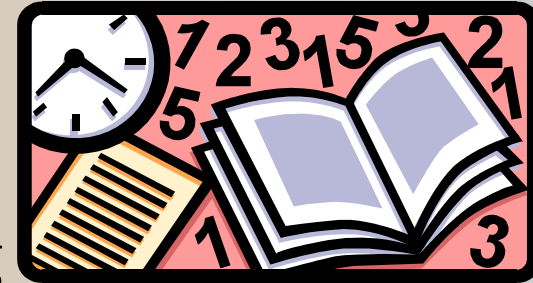
Aims at enhancing the children's personal and social development so that they build up a positive self image and are confident to accept themselves and to be accepted by others. This part of the programme is conducted by social workers from the Salvation Army. Social workers also provide counselling for students and parents experiencing difficulties.





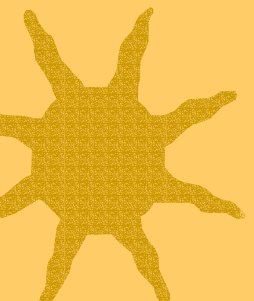
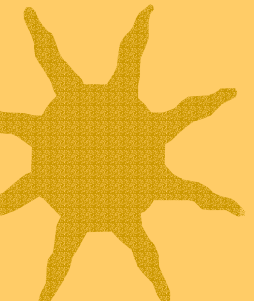
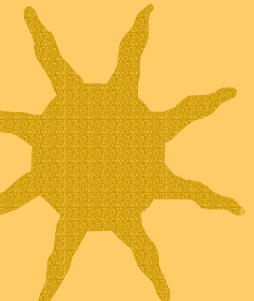
Lesson Arrangement

- 10 lessons per day
- Each class is 35 minutes in long
- The morning classes consist of 6 academic subjects
- The afternoon classes consist of 3 adaptation programmes conducted by social workers from the Salvation Army.





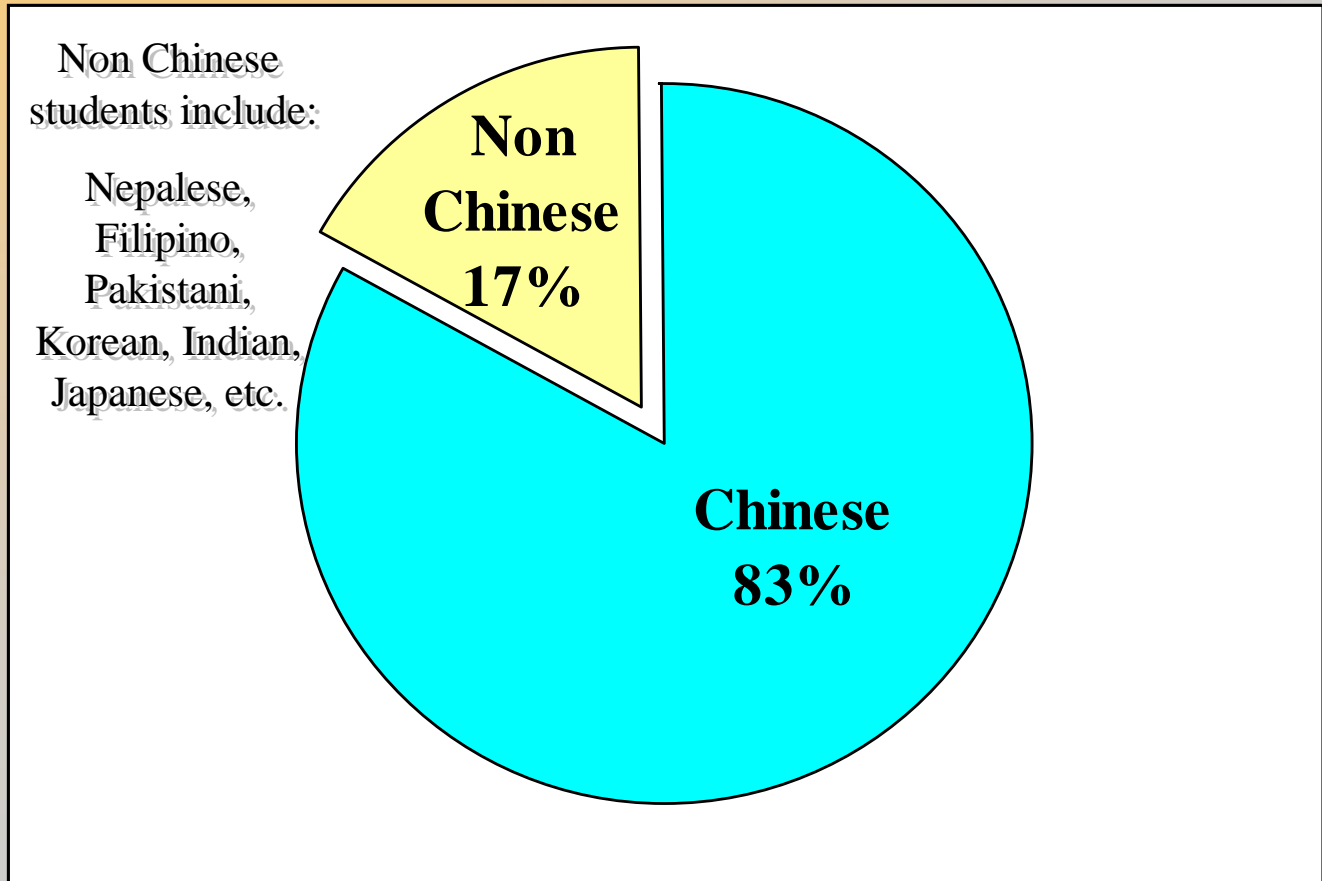
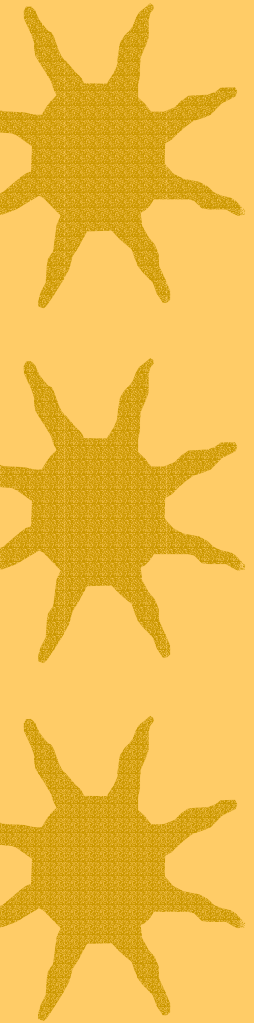
Timetable



Time	Lesson	MON	TUES	WED	THUR	FRI
8:15-8:30	Assembly					
8:30-8:45	Class Teacher's Period					
8:45-9:20	1					
9:20-9:55	2					
9:55-10:30	3					
10:30-10:50	Recess					
10:50-11:30	4					
11:30-12:05	5					
12:05-12:40	6					
12:40-1:05	Lunch					
1:05-1:30	Recess					
1:30-2:05	7					
2:05-2:40	8					
2:40-3:15	9					
3:15-4:00	10					



The ration of Chinese and Non Chinese Speaking Students in our school:



How does our course cater for the needs of the Non Chinese Speaking Students?

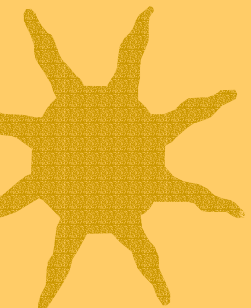
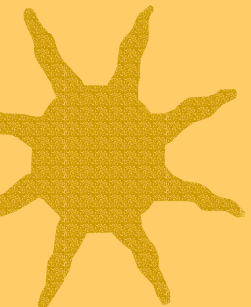
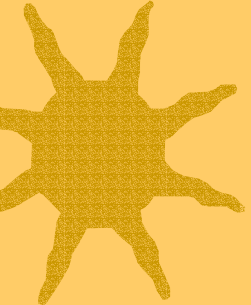
- For Chinese Subjects: separated
- For Other Subjects : mixed





How do they learn Chinese?

- A tailored made course
- Designed by the Professors from Hong Kong Polytechnic University and Hong Kong University and our teachers
- Adopt the theory of Second Language Learning

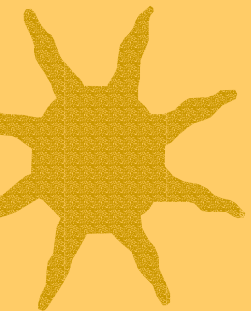
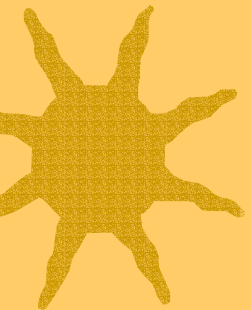
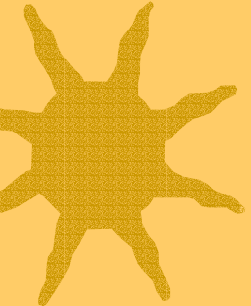




Chinese Programme Content

A. Speaking and Listening

- Understanding Cantonese classroom instruction
- Engaging in daily conversations
- Exchange greetings
- Asking for information/ help

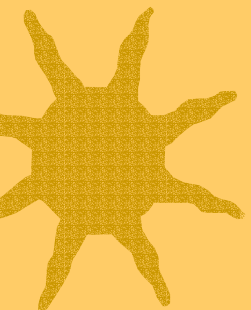
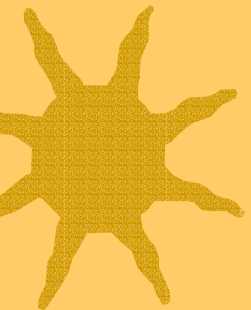
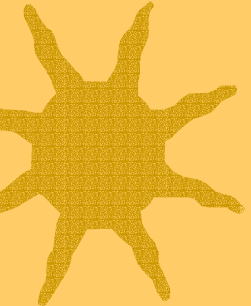




Chinese Programme Content

B.Reading:

- Recognizing signs and understanding simple instructions in school setting(names of rooms, notices, rules and regulations) and in the community(names of MTR stations, road signs)
- Recognizing simple Chinese characters
- Understanding the meaning of frequently used vocabulary at P.1 Level
- Enjoying reading simple stories with illustrations.





Chinese Programme Content

C. Writing:

- Knowing how to write Chinese characters
- Knowing how to construct simple sentences





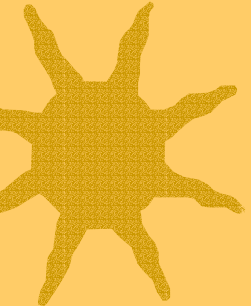
Chinese Programme Content

D. Providing opportunity for students to get in touch with local Chinese culture: family relationship, Chinese festivals and costumes.

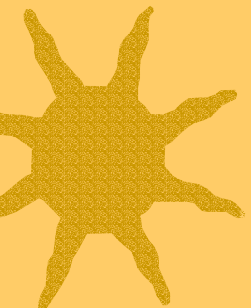
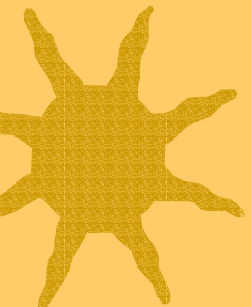




Chinese Programme Content



E. School Familiaration



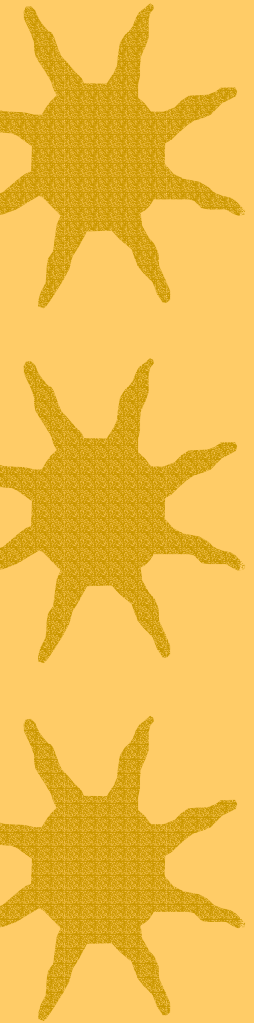


What are the difficulties of a multi cultural school facing?

- Lacking of human resources (suitable teachers, teacher assistants....)
- Cultural differences (expectation of parents, parenting practice, social norms)
- Problems of communication (different ethnic minority groups exist in one school)
- Lacking of suitable curriculum (for learning Chinese and English as a second or third language)



Portuguese Community School



Thank you for your attention



The end