

# **Eligibility & Assessment of LTC needs in Japan**

*Mrs. Lee Leung Man Ying*

*Home Manager Wo Ping C&A Home*

*Haven of Hope Christian Service*

4/10/2002

介護

Kaigo

Long Term Care

保険

Hoken

Insurance

# Japan Study Trip



Eligibility & Assessment

Service Content & Delivery Model

Quality Measurement

Financing

# *Eligibility & Assessment*

Service Content & Delivery Model

Quality Measurement

Financing

# Eligibility

Type 1:  
aged 65 years and over



Type 2:  
aged 40 to 64 years

# 15 designated diseases

1) Amyotrophic lateral sclerosis (ALS)

肌萎縮性脊髓側索硬化

2) Ossification of posterior longitudinal ligaments

骨化

3) Osteoporosis resulting in bone fractures

骨質疏鬆引致骨折

4) Shy-drager syndrome 神經性變

5) Early onset dementia 早老性痴呆

# 15 designated diseases

6) Spinal cerebellar degeneration

脊髓小腦變性

7) Spinal canal stenosis 脊柱管狹窄

8) Premature senility 早老症

9) Diabetic neuropathy 糖尿病性神經障礙

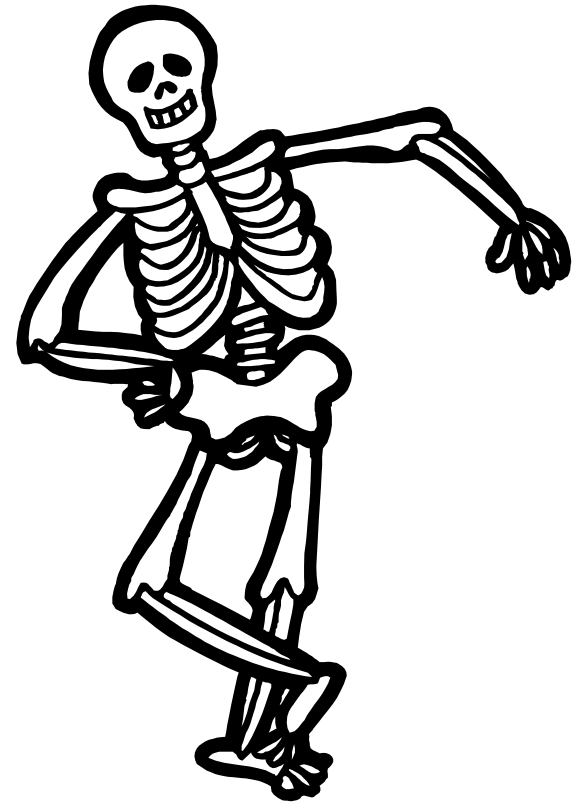
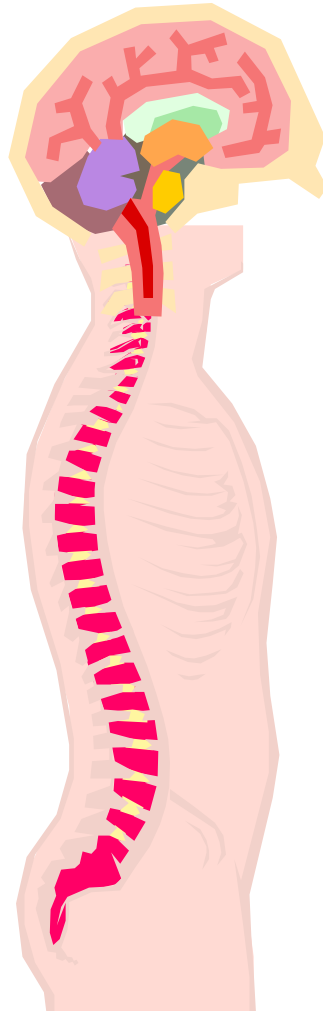
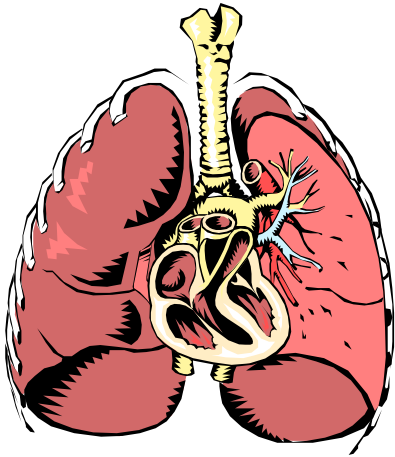
10) Cerebrovascular disease 腦血管意外損傷



# 15 designated diseases

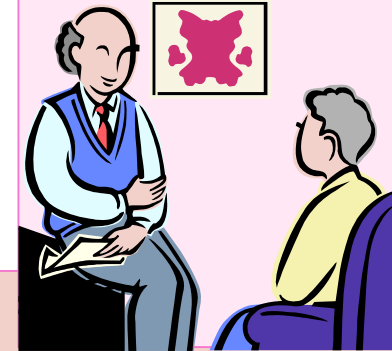
- 11) Parkinson's disease 帕金森症
- 12) Arteriosclerosis obliterans 閉塞性動脈硬化
- 13) Chronic articular rheumatism 風濕性關節炎
- 14) Chronic obstructive pulmonary disease  
慢性氣道阻塞
- 15) Osteoarthritis with significant deformation  
in both knees joints or in hip joints 骨關節炎

# 15 designated diseases



# Assessment

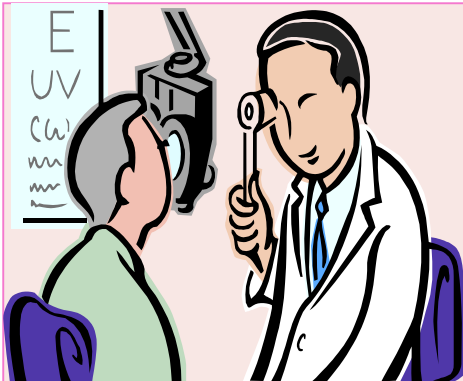
Submission  
of  
Application



Home  
Visit



Computerisation



Doctor's  
recommendation



Nursing  
Care  
Authorisation  
Board  
meeting

# Assessment Content

- 1) Joint Movement
- 2) Movement
- 3) Complicated Movement
- 4) Special Care
- 5) Self Care
- 6) Communication & Perception
- 7) Problematic Behaviour

# Assessment Content

## 1) Joint Movement

- paralysis of limbs
- limitation of range of joints

# Assessment Content

## 2) Movement

- moving one hand up to chest
- rolling in bed
- raising the upper body up from lying
- maintaining sitting position with both feet on the floor
- maintaining sitting position with both feet off the floor
- walking
- moving

# Assessment Content

## 3) Complicated Movement

- standing up from sitting
- standing upright with both feet
- standing upright with one foot
- getting into bath tub
- bathing oneself

# Assessment Content

## 4) Special Care

- skin lesion
- eating problem
- swallowing problem
- incontinence –urination
- incontinence - defecation
- needing care after urination
- needing care after defecation



# Assessment Content

## 5) Self Care

- personal hygiene
- tooth brushing
- face washing
- hair washing
- nail cutting
- changing of clothing
- buttoning & unbuttoning

# Assessment Content

## 5) Self Care

- putting on and taking off the shirt
- putting on & taking off the pants
- putting on and taking off socks
- cleaning of room
- taking medicine
- money management

# Assessment Content

## 6) Communication & Perception

- vision
- hearing
- response to the direction
- understanding daily routine
- answering birthday and age correctly
- recalling what he did before the interview
- answering one's name correctly
- knowing the current season
- telling where he is

# Assessment Content

## 7) Problematic Behaviour

- amnesia
- delusion
- emotional unstable
- wandering
- restless
- insomnia
- violent behaviour
- collect things without permission

- cannot handle fire properly
- conduct unhygienic behaviours
- putting unedible things into mouth
- improper sexual expression

# Assessment Content

## Specific Medical Treatment

- IV Infusion
- dialysis
- stoma care
- oxygen therapy
- respirator
- tracheotomy

- pain management
- tube feeding
- urinary catheter care
- treatment of pressure sore
- monitoring of vital signs

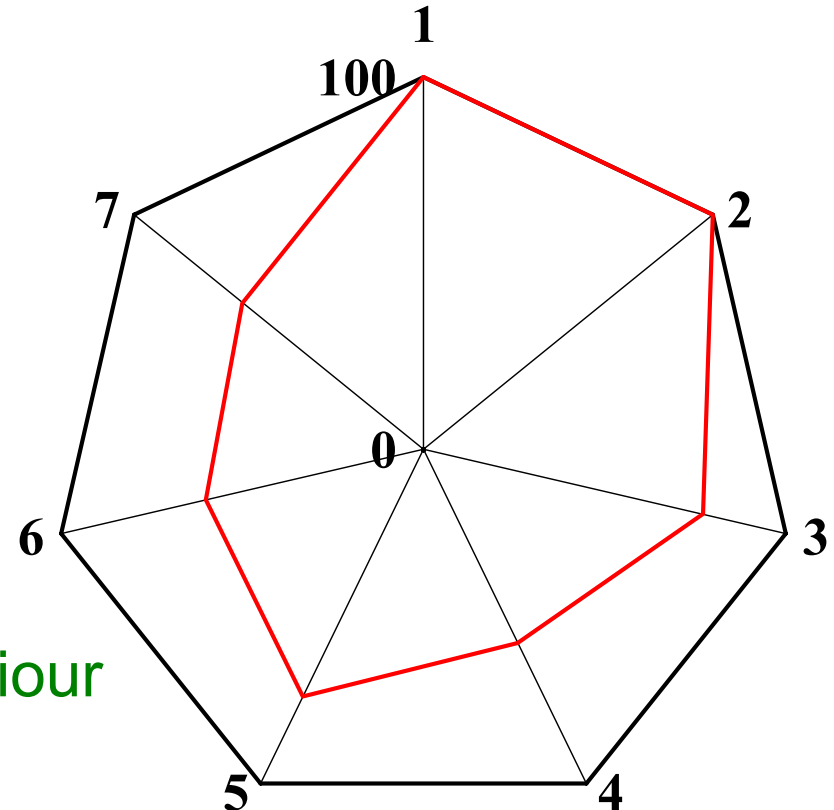
# Professional Medical opinion

- current status of medical services provided
- diagnosis
- stability of the disease
- past history and treatment
- laboratory and Xray finding
- special medical treatment
- current findings of physical
- and psychological status
- professional recommendation
- to caregiver

# Example of Assessment Summary

## Level of Care

- 1) Joint Movement
- 2) Movement
- 3) Complicated Movement
- 4) Special Care
- 5) Self Care
- 6) Communication
- 7) Problematic Behaviour



Group1	Group2	Group3	Group4	Group5	Group6	Group7
100	100	77.9	57.9	73.8	59.9	62.5

# Example of Assessment Summary

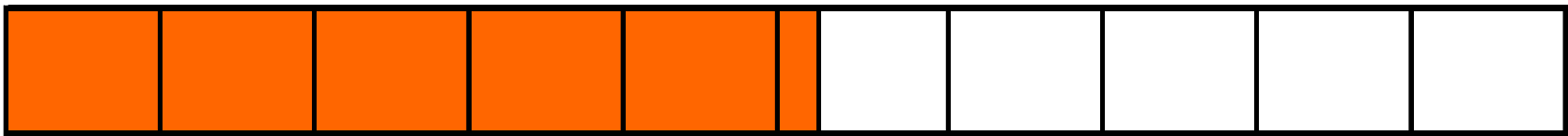
## Level of Independence

		<b>cognitive</b>					
		IND	I	II	III	IV	V
<b>physical</b>	IND						
	1						
	2						
	3						
	4						



# Example of Assessment Summary

## Nursing care time



52.4 min

Eating	Elimination	Movement	Hygiene	Indirect care	Handling of behaviour	Physical training	Special care
0.7	2.4	1.0	9.2	7.3	20.3	4.0	7.5

**Eligibility & Assessment**

**Service Content & Delivery  
Model**

**Quality Measurement**

**Financing**

*Thank you*