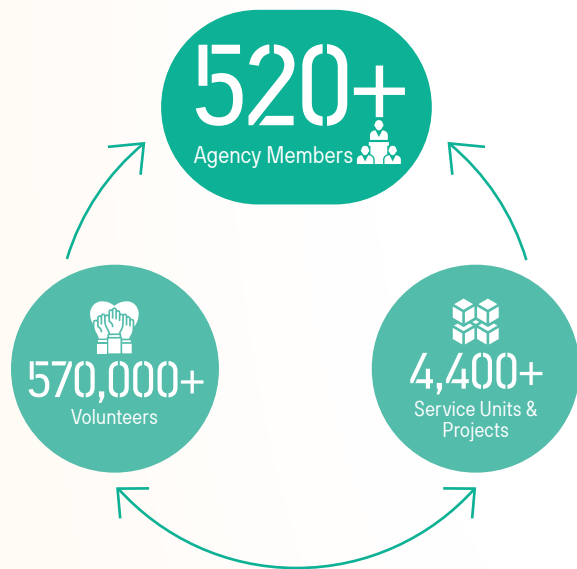


香港社會服務聯會
THE HONG KONG COUNCIL OF SOCIAL SERVICE

凝聚·共建
United for an
Inclusive Society



The Hong Kong Council of Social Service (HKCSS)

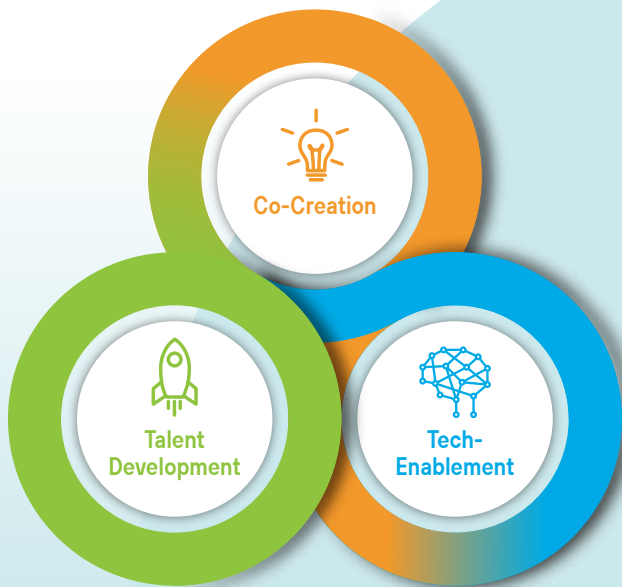
The HKCSS is a statutory body established in 1947. Together with our Agency Members, we uphold social justice and equality in our mission to advance the well-being of the Hong Kong community. The HKCSS is committed to building an impact-oriented, collaborative and innovative social service sector, and co-creating a better society with stakeholders across different sectors. The HKCSS has over 520 Agency Members, with service units throughout Hong Kong, providing high-quality social services to those in need.

Patron:

The Hon John KC LEE, GBM, SBS, PDSM, PMSM
The Chief Executive of the HKSAR



→ Strategic Directions



→ Co-Creation

Engage stakeholders from different sectors, through a more agile, open, exploratory, and experimental approach, to collectively create impact-driven solutions to address various social issues.

→ Tech-Enablement

Develop and apply innovative technologies to enhance the effectiveness and efficiency of various social services, thereby providing more timely and appropriate support to the public.

→ Talent Development

Through diverse development and training programmes, the professional capabilities of the social service sector are enhanced, allowing talented individuals to contribute their strengths, and promoting the sustainable development of the sector.



"S+ Summit cum Expo"

Facilitate proactive engagement with diverse stakeholders to foster constructive dialogue on social development issues in Hong Kong and the broader region, so as to promote "Synergy", "Social Impact" and "Sustainability".



"Gerontechnology"

Establish a collaborative platform for gerontechnology, implement rental and educational services, and organise the "Gerontech and Innovation Expo cum Summit" in order to drive the development and application of gerontechnology for enhancing the quality of life of elderly, persons with disabilities, and caregivers.



"Cross-sector Collaboration and Innovation"

Partner with various stakeholders, including the government, businesses, social service organisations, social enterprises, professional associations, and charitable foundations, to promote social innovation and collectively address social challenges and enhance social cohesion.



"Care Food"

Develop the first unified, clear, and localized "Guideline of Care Food Standard" in Hong Kong to promote the provision of nutritionally balanced and appetizing meals for individuals with swallowing difficulties in the community.



"Efficiency Enhancement"

Provide diversified training and exchange programs for practitioners, management, and board members in the social service sector as well as promote professional development and enhance the overall quality of service, governance, and management of welfare organisations.



"Service Development"

In response to social needs such as population ageing, changing family structures, special education needs, as well as caring for caregivers and persons with disabilities, promote collaborative efforts among the government, social service sector, and society as a whole to support the vulnerable groups.



"Social Housing"

As the pioneer in the development of transitional social housing, we develop social housing projects that integrate social service support with the provision of decent and affordable housing for grassroots citizens, and nurture a social housing ecosystem.