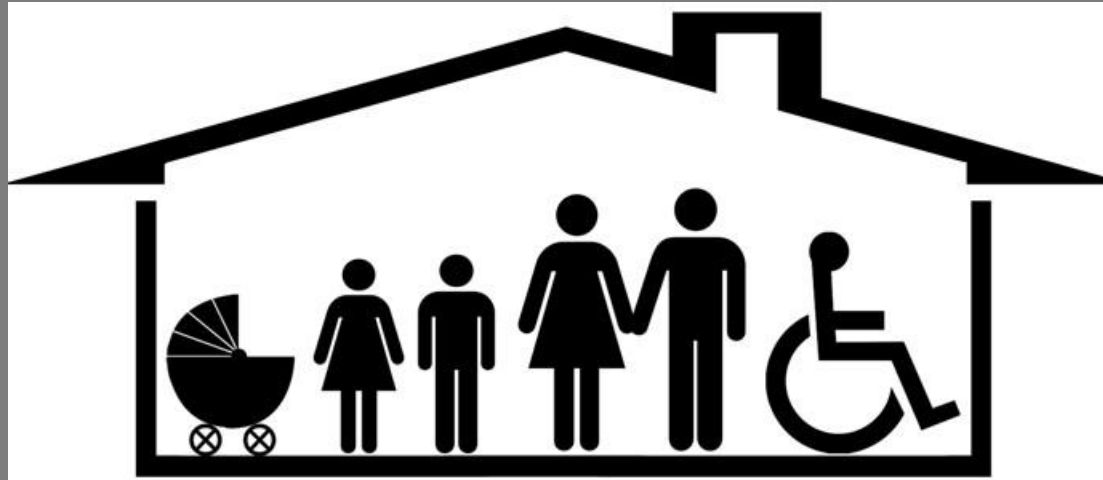


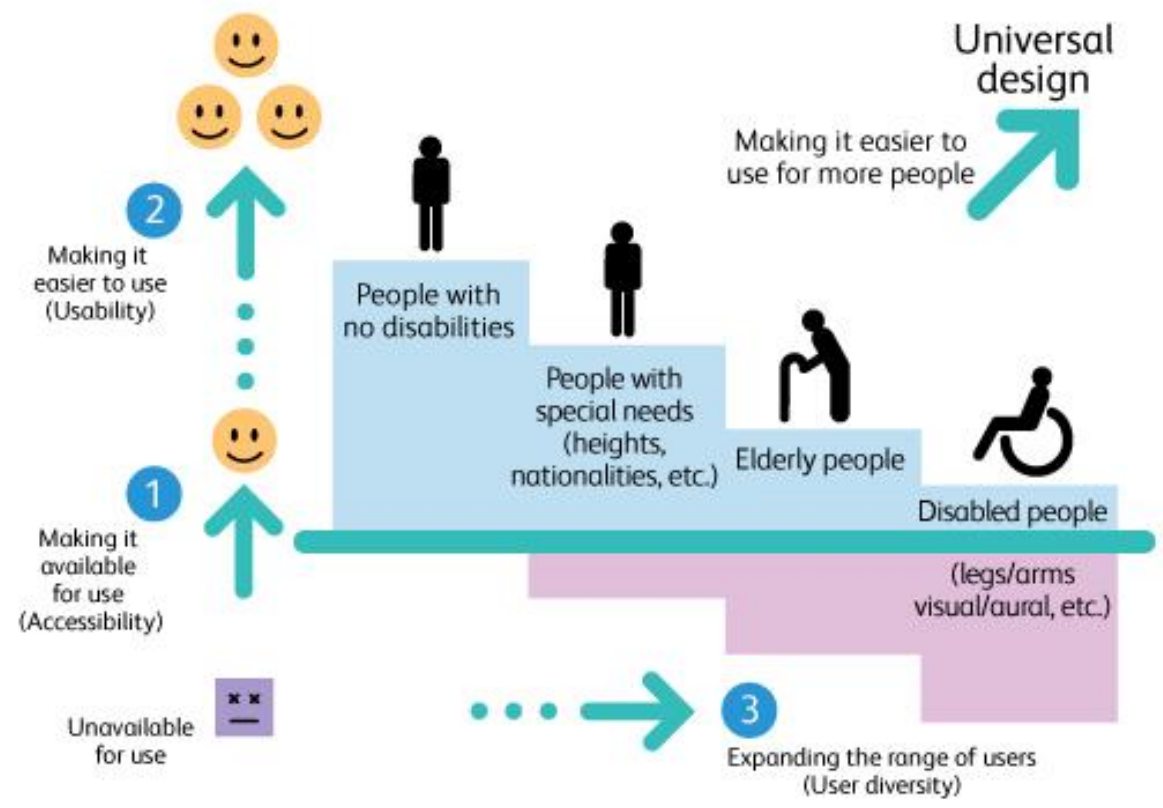
Family Friendly

Universal Design

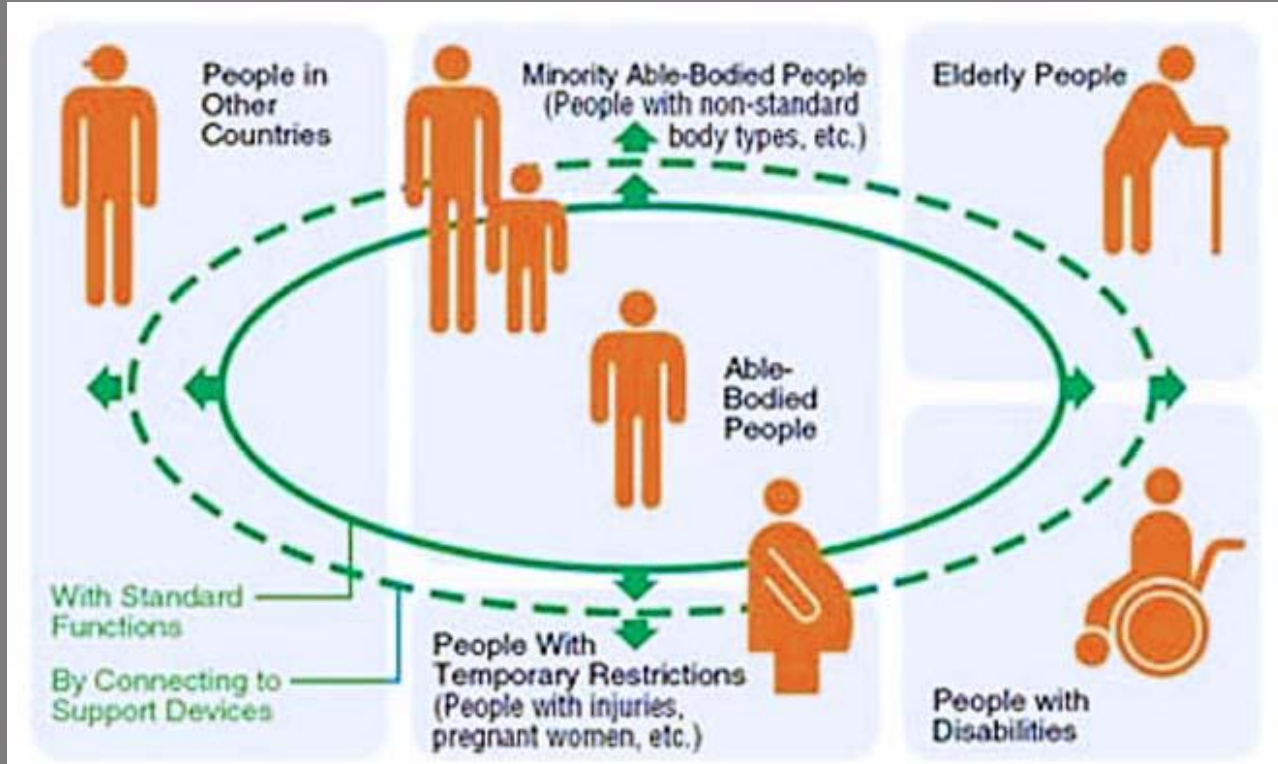


Universal Design

Universal Design



Universal Design



Universal Design is an approach to home building, remodeling, and community development that centers on safety and ease of movement, both inside and outside of the home.



The Principles of Universal Design

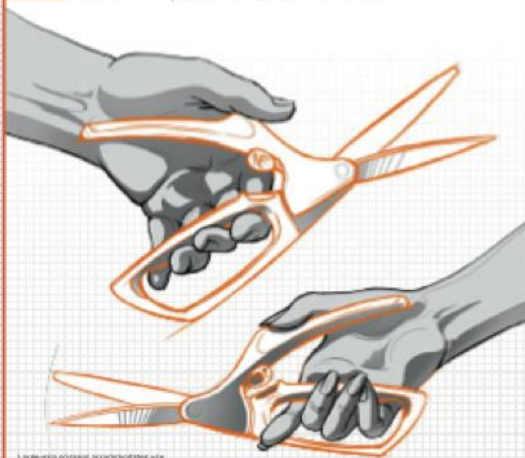


Wider door with automatic door opener for all promotes equality of access to facilities.

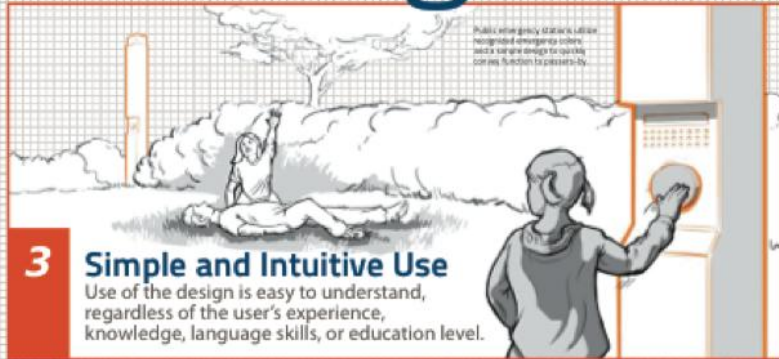
1 Equitable Use
The design is useful and marketable to people with diverse abilities.

The design of products and environments to be usable by all people, to the greatest extent possible, without the need for adaptation or specialized design.

2 Flexibility in Use
The design accommodates a wide range of individual preferences and abilities.

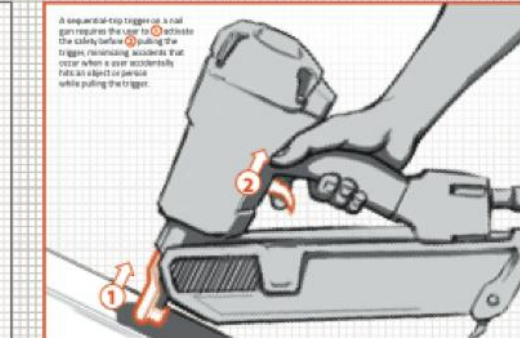


Larger grip allows easier/hotter use with either hand and allows alteration between the two in highly repetitive tasks.



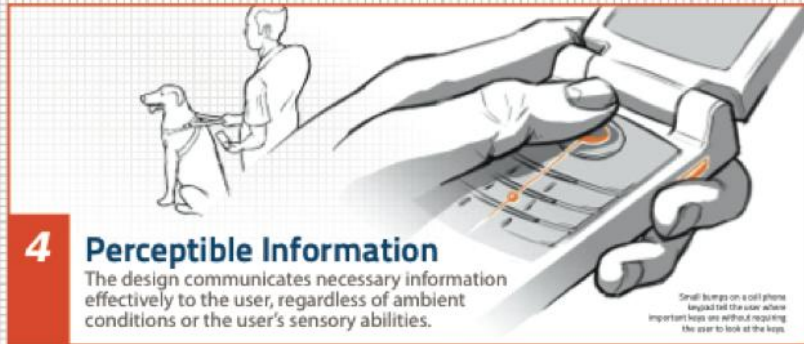
Public emergency stations utilize recognized emergency colors, text, and signage design for quickly correct function to pressure-by.

3 Simple and Intuitive Use
Use of the design is easy to understand, regardless of the user's experience, knowledge, language skills, or education level.



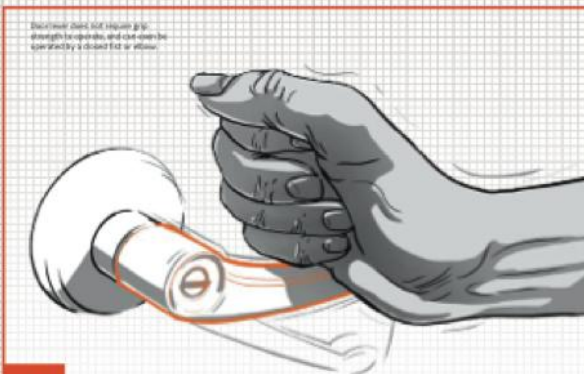
A sequential-step trigger on a nail gun requires the user to activate the safety feature (1) pulling the trigger, minimizing accidents that occur when a user accidentally pulls an object or person while pulling the trigger.

5 Tolerance for Error
The design minimizes hazards and the adverse consequences of accidental or unintended actions.



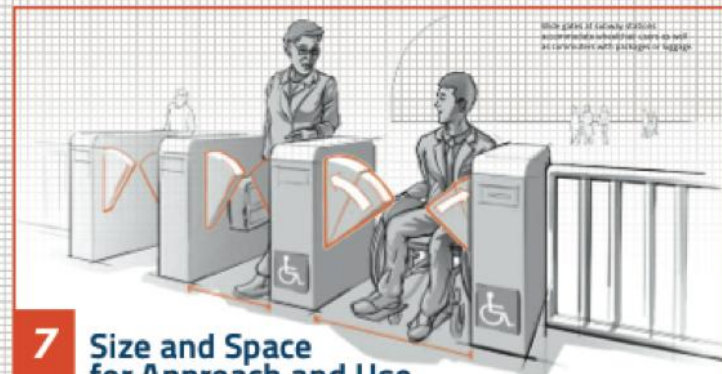
4 Perceptible Information
The design communicates necessary information effectively to the user, regardless of ambient conditions or the user's sensory abilities.

Small bumps on a cell phone keypad tell the user where important keys are without requiring the user to look at the keys.



Door lever does not require grip strength, leverage, and can even be operated by a closed fist or elbow.

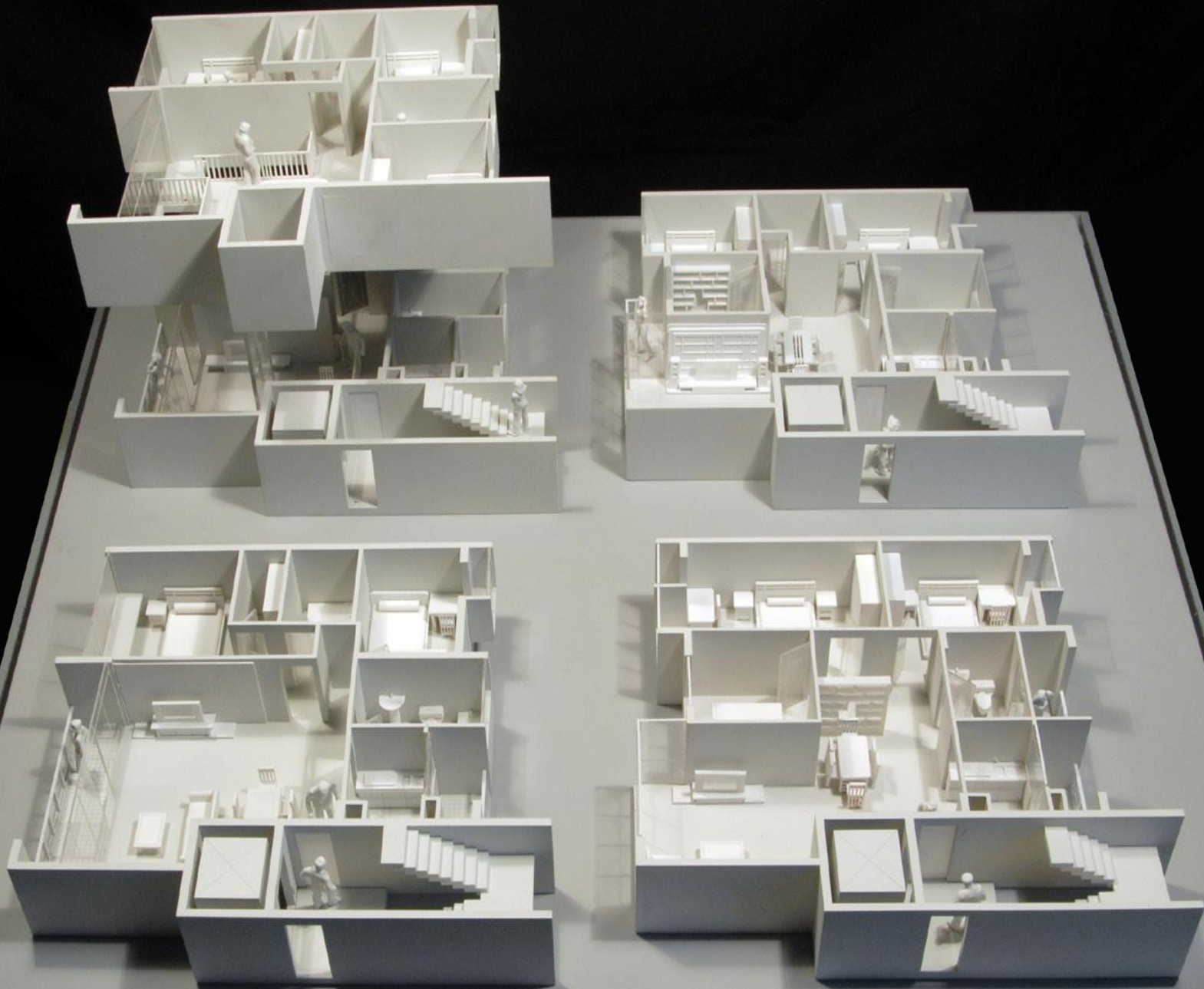
6 Low Physical Effort
The design can be used efficiently and comfortably and with a minimum of fatigue.



Wide gaps at subway stations accommodate wheelchairs as well as commuters with packages or luggage.

7 Size and Space for Approach and Use
Appropriate size and space is provided for approach, reach, manipulation, and use regardless of user's body size, posture, or mobility.

Adaptable Apartments and Houses



Design for Home











Design for The Physically Challenged





Design for The Physically Challenged





Some refrigerators, such as this one at a retail appliance store in Orlando, are specially designed with removable freezer drawers that slide out, which gives Rossetti full reach; the refrigerator shelves do the same and have adjustable heights. Doors that swing far back are also helpful, Rossetti says.



Design Details

Design Details



Design Details







Design Details



Family Friendly

Universal Design

